

# FAMILYSEARCH 2024

FamilySearch is a non-profit organization that provides family history services free of charge to everyone, regardless of tradition, culture, or religious affiliation.

When opening the page [familysearch.org](https://familysearch.org) you will automatically go to the Australian site. This has access to all records available worldwide. You will need to sign in for complete access. To create an account simply click on **Create Account** on the top of the page. You can also sign in with Facebook, Google or Apple accounts.



From the opening page you can do an Ancestor Search, Search for Australian Records or get help to get started. You can also start or print a family tree.

You can share with other family members/researchers, friends, or other groups you can establish. Simply select **Family Groups** or **Contacts** under the menu symbol next to your name.

To search simply click on the **Search** button and select **Collection Search** or **Place Search**. Click on **More Options** to do a more advanced search.

## FAMILY TREE

To start a family tree click on and add yourself, or whoever you would like to start the tree with. Keep in mind that living people that you add are available to you, no one else will see them. Add any living people to start the tree and then when reaching your first deceased person do a search.

*Family Tree* is one worldwide tree, so each person should only be entered once. If you find a name that is already in the system then your tree will populate from there, as far as it has been compiled.

You can select a person on your tree and to the right of the screen information on that person will show. Select **Person** to go to their details. This will open the individual's page.

It is on the **Person** page that all information on that person and family can be added or altered; FS may add **Research Help**, with links, to possible sources for that person you can:

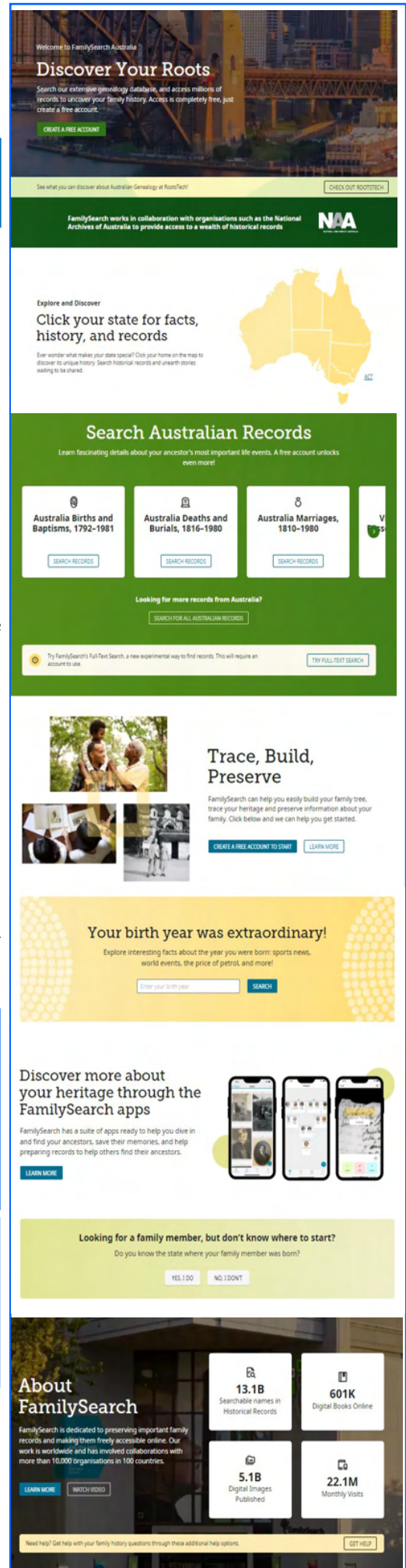
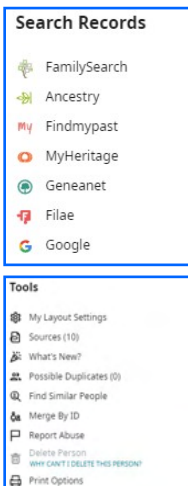
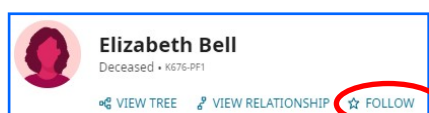
**Search Records** on other websites such as *Ancestry*, *FindMyPast* (you will need a subscription for paid sites);

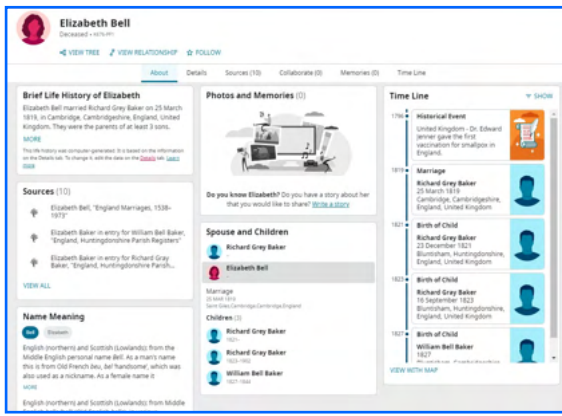
**Notes** here you can add notes relating to the individual;

**Latest Changes** details of what was changed and who changed it, some can be removed;

**Tools** includes list of tools you can use, (you can only delete a person that you have entered and who has not had any alterations by anyone else), print options include Person Details, Pedigree, Portrait Pedigree, fan chart, Family Group Record also with sources.

You can receive notifications to any changes for an individual, simply click **Follow** at the top of the page. You can also View their Tree and View their relationship to you.

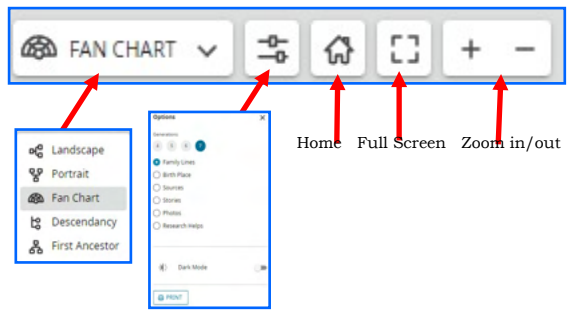




**Image Available**  
 To view these images do one of the following:  
 • Access the site at a FamilySearch center.  
 • Access the site at a FamilySearch affiliate library.  
 CLOSE

- ◆ **About** gives an overview of the person.
- ◆ **Details** shows all the information on that person
- ◆ **Sources** shows any attached sources
- ◆ **Collaborate** allows you to add notes and discussions about the individual.
- ◆ **Memories** tab allows to add photos and documents (including stories) about the person.
- ◆ **Time line** shows the timeline of the person and a related map.

**FAMILY TREE OPTIONS**



You can view your tree several ways. Simply select the view or change as required. To move around the tree click and drag. To expand generations click on the arrows next to the parents. To see the children click on the arrow next to the children. From any person you click on you can go to the Person page.

**SEARCH**

**Records** simply enter basic information to search for a person, collection or place. To export results select **Preferences** at the top of the list, select format and export type. You can export up to 100 records by changing the **Results per page** at the bottom of the list. If preferred saving the url will open the search results.

**Images** by place, this will give you a list of films that have been imaged for that place.

**FamilyTree** allows you to search for a name to see if a person appears on *FamilyTree*. There are options to refine the search.

**Genealogies** to find a person within a compiled tree, this includes the IGI, Ancestral file and others.

**Catalogue** you can search by place or film/fiche number. Films can no longer be ordered. Some film images have restrictions. These are set by the

record owner, so some films can be seen by everyone, some only by LDS members, some only in a Family History Centre/ Affiliate Library and some only in Salt Lake City.

**Books** a collection of more than 500,000 digitized genealogy books, family histories, maps, yearbooks, and more.

**Wiki** allows you to search information on genealogical research around the world.

**MEMORIES**

**Memories** option includes Overview, how to add memories; Gallery shows memories attached to people in your tree you can refine to all memories, photos, stories, documents, audio); People shows those with attached memories; Find, you search by name and other events.

**GET INVOLVED**

This shows ways you can help others, Help people lost to history get found by their families. The activities listed make it possible to find people from the past.

**ACTIVITIES**

This has activities to help you encourage others and also to help you learn more about your family.

**NEED HELP**

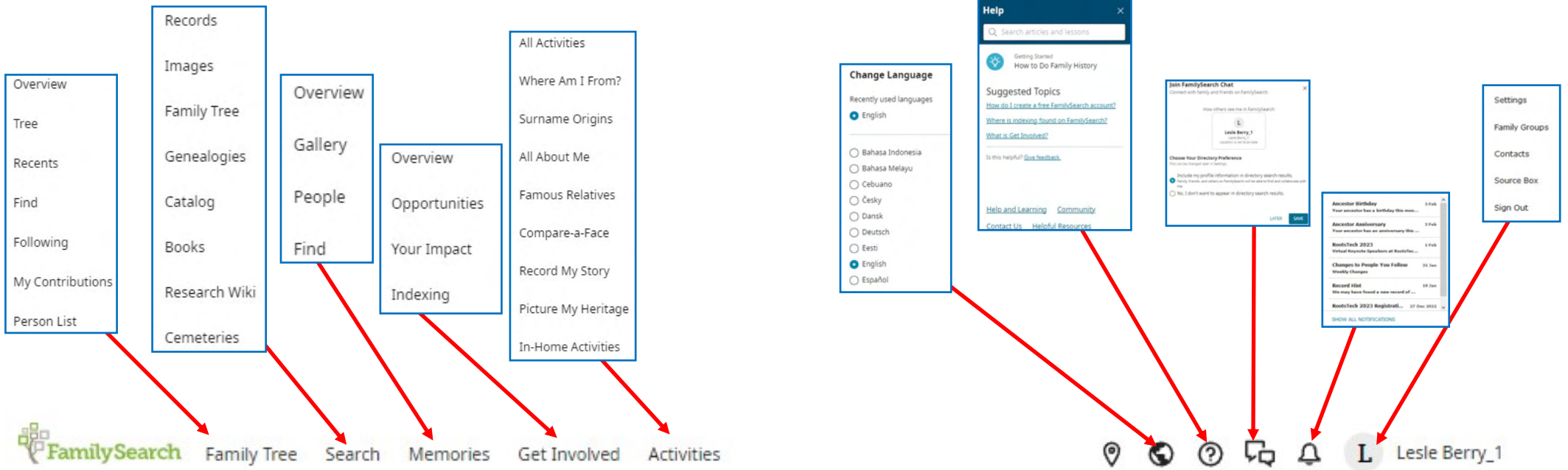
Help Menu offers options for getting help.

- ◆ **Help and Learning** has a number of videos on various topics, are available.
- ◆ **Classes and videos** thousands of videos on a range of topics.
- ◆ **Join a community** to find answers to specific questions and join others who share the same family history interest.
- ◆ **One-on-one Help** support options are also available.



**QUICK LINKS AT BOTTOM OF PAGES**

- ◆ **About** tells you the history of *FamilySearch*
- ◆ **Volunteer** shows options on volunteering opportunities and hoe to 'give back'
- ◆ **Blog** articles from the *FamilySearch Blog*
- ◆ **Find Ancestors** options for searching for individuals
- ◆ **Site Map** of the website
- ◆ **DNA** options available and what to do with results also FAQ/Terminology
- ◆ **Solutions Gallery** find tools to help you discover, organize, and explore your family history
- ◆ **Mobile Apps** *FamilySearch* apps fuel family discoveries whenever and wherever they happen
- ◆ **Contact Us** select a region to find local help



### 🔍 Ancestor Search

Search for your ancestors today



First Names

Last Names (required)

**SEARCH**

### 🔍 Discover Your Family's History



Build your family tree, and find new ancestors as you add what you know.

**BUILD YOUR TREE**